



Installation and Operating Instructions

Manufactured Exclusively By:



Medical Illumination
547 Library Street
San Fernando, CA 91340
EPA Est. No: 94728-CA-1, 94728-CA-2 & 96770-IL-1

Table of Contents

Limited Warranty	4
Introduction to VidaShield UV24:	5
Included Items:	5
Features:	6
Safety Precautions/Warnings:	7
Drop Ceiling Installation Instructions	7
Tools Required	7
Building Power and Hanging Ceiling Requirements	7
OSPHD Compliant Hard Ceiling Mount Installation Instructions	17
Operating Instructions	22
Antimicrobial Performance	23
UV Lamp Check Procedure	23
UV Lamp Maintenance:	24
MERV 6 Filter Maintenance:	24
Managing Spent UV Lamps:	24
Troubleshooting:	25
Replacement Parts:	25

Table of Figures

Figure 1: VS Models	5
Figure 2: Unpacking the VS.....	8
Figure 3: Mounting Brackets.....	9
Figure 4: Hanging Diagram.....	10
Figure 5: Mounting Bracket Installation.....	10
Figure 6: Drilling the Mounting Bracket.....	11
Figure 7: Riveting the Mounting Bracket.....	11
Figure 8: Securing the Mounting Bracket Corners.....	12
Figure 9: Installing the Shoulder Bolt into the Slider Joint	13
Figure 10: Fixture Hanging from Ceiling	13
Figure 11: Preparing to Connect Power	14
Figure 12: Removing the Electrical Access Plate	14
Figure 13: Installing the Wiring Conduit Access Plate	14
Figure 14: Grounding the System.....	15
Figure 15: Connecting to Incoming Power.....	15
Figure 16: Completing the Wiring	16
Figure 17: Completed Drop Ceiling Installation	17
Figure 18: Structural Beams	17
Figure 19: Hard Ceiling Mounting Box Knock-Outs	18
Figure 20: Temporary Retaining Bracket installed - approx. 1/8 in. gap	18
Figure 21: Preparing the Mounting Brackets	19
Figure 22: Mounting the Hard Ceiling Mounting Box	19
Figure 23: Temporarily Mounting of the Hard Ceiling Mounting Box	20
Figure 24: Hard Ceiling Mount, Flange/Sheet Rock/Structural Ceiling Beam	20
Figure 25: Finalizing the Hard Ceiling Mounting Box Installation.....	21
Figure 26: UV Operating Instructions	22
Figure 27: UV Indicator Light.....	23

Medical Illumination International, Inc.

Limited Warranty

This document comprises the general terms of your product's Limited Warranty. This Limited Warranty is applicable to products sold by Medical Illumination International, Inc. or one of its subsidiaries or divisions (collectively, "MI") through one of MI's authorized dealers, distributors or sales representatives (an "Authorized Dealer"). This Limited Warranty is not applicable to any product not purchased from an Authorized Dealer. This Limited Warranty extends only to the first retail purchaser of a product and is not transferable or assignable.

Your product is warranted against defective material and/or workmanship, excluding normal replacement parts, for a period of three (3) years from the date of shipment. Normal replacement parts include, but not limited to, bulbs, sterilizable handles, filters and glass items. This Limited Warranty applies exclusively to the repair or replacement of parts recognized as defective by MI that are in normal use and have not been modified or repaired by unauthorized personnel.

This LIMITED WARRANTY is in lieu of all other warranties, expressed or implied, including any implied warranty for a particular purpose and all other obligations or liabilities, including liability for incidental, special or consequential damages or labor.

In the event of a defect or failure covered under this Limited Warranty, please contact MI immediately by phone (818/838-3025), fax (818/838-3725), email (info@medillum.com) or through our website (<http://www.medillum.com>). Be prepared to give the model number, serial number and full description of the issue. This Limited Warranty will not apply if the MI serial number affixed to the product has been removed, obliterated or defaced.

Our Customer Service department will attempt to solve the problem over the phone. If it becomes necessary, we will determine, in our sole discretion, the best way to address the issue. We may require that the product be sent to our factory for repair. In limited instances, we may dispatch an authorized service technician. No product serviced by other than our authorized service technician will be covered by this Limited Warranty.

In the event we determine that your product needs to be repaired, either onsite or by return to our factory, please do not continue to use the product prior to its authorized repair. MI is not responsible for costs or expenses incurred for loss of use of the product.

If we require the return of the product to our factory, you will be provided with a Return Authorization number. Products sent to the factory without a Return Authorization number will not be accepted. It is your obligation to arrange for return shipment of your product to the factory for warranty service, which shall be at your expense. Your Product must be returned to our factory within thirty (30) days of the date of the Return Authorization. Carefully package the product and return it, freight prepaid and insured, with the Return Authorization number clearly marked on the outside of the box, to Medical Illumination International, Inc, 547 Library Street, San Fernando, CA 91340, RA#_____.

Damage resulting from inadequate packing is not covered by this warranty, and shipping insurance does not cover damage due to inadequate packing. MI cannot be held responsible for in-transit loss or damage. In the event that freight-related damage should occur, we will notify you immediately so that you can file a damage claim with the freight carrier.

Within the warranty period, MI will evaluate your returned product, repair as appropriate, and ship the product back to you with freight costs prepaid by MI. In the event that damage or failure is discovered that is not covered by this Limited Warranty, we will contact you for your approval of all costs that may be incurred prior to commencing any repairs.

This Limited Warranty does not cover the following:

- Any field labor or outside services, including, but not limited to, electricians, contractors, installation services, routine maintenance or other repair services.
- Damage to the product resulting from tampering, accident, abuse, negligence, alteration or other caused unrelated to problems with material and/or workmanship.
- Damage due to improper installation, use, cleaning or maintenance, as outlined in the Installation and Service Manual.
- Labor costs associated with removing, re-packaging for shipment or reinstalling product.

Thank you for purchasing VidaShield™ UV24. Before attempting to install or operate the unit, please read this manual thoroughly and retain it for future reference.

Introduction to VidaShield UV24:

Congratulations for purchasing VidaShield UV24. VidaShield UV24 is a UVC, continuous antimicrobial environmental air purifier system. It combines an ultraviolet germicidal irradiation chamber and air circulating fans with an overhead ceiling light. The patented system uses UVC light and filtration to draw in and treat environmental air. It unobtrusively and continuously reduces bacterial and fungal populations in treated air* and reduces the settlement of viable bacteria and fungi from treated air*- 24 hours per day/7 days a week/365 days per year. VidaShield UV24 can treat a volume of air equivalent to an 8' x 10' x 10' room four times per hour and is believed to be a useful component of facility cleaning protocols. Conveniently installed in ceilings, the VidaShield UV24 is an unobtrusive space saver. VidaShield UV24 is designed for use in hospitals, long term care facilities, nursing homes, schools, commercial office buildings, and any other location where cleaner environmental air is desired. VidaShield UV24 does not substitute for good building air exchange practices or manual cleaning and disinfection practices.

Medical Illumination manufactures three separate types of VidaShield UV24 systems; a fluorescent or LED tubes model, an LED model and a version with no downlight. In addition, we manufacture European standards and Canadian standards for all models. This manual covers the installation process for all versions.



Figure 1: VS Models

Included Items:

* Reductions measured as the minimum number of microbial units per surface area or minimum number of microbial units per volume of treated air.

1 VidaShield UV24 Unit
1 UVC lamp
4 MERV 6 filters
2 mounting brackets
6 rivets – 3/16" Diameter
2 fluorescent lamps and lens (VS01) or LED panel and lens (VS02) or acoustical ceiling tile (VS03)

Features:

Some features are:

- ✓ 24/7/365 air treatment reduces bacterial and fungal populations in treated air* and reduces the settlement of viable bacteria and fungi from treated air;*
- ✓ Light indicates if there is a problem with the UV lamp or ballast
- ✓ Provides energy efficient fluorescent lighting (VS01) or bright, dimmable LED lighting (VS02)

* Reductions measured as the minimum number of microbial units per surface area or minimum number of microbial units per volume of treated air.

Safety Precautions/Warnings:

- To avoid the risk of electric shock, disconnect AC power before installing or maintenance servicing.
- Do not expose this device to water or excessive moisture.
- Installation should be performed by qualified personnel only.
- Consult your local building code for approved wiring & installation.
- Do not use outdoors.
- Do not use equipment for other than intended use.
- The use of accessory equipment is not recommended by the manufacturer & may cause an unsafe condition.
- Light from UV lamp may cause eye or skin injury including burns that are not immediately detectable. Do not operate UV lamp when lamp chamber is not sealed light-tight. If UV light exposure to people is possible, potentially exposed persons should wear UV filtering eye protection, long sleeves and gloves.

Note: This device should not be used in buildings that are under construction. Heavy volumes of large particulates like construction dust and debris will clog up the filter and impact the effectiveness of the VidaShield UV24. In the event that construction needs to be conducted in an area where VidaShield UV24 units are already installed, it is recommended that the UV portion of the unit is powered off for the duration of the construction project and new filters are inserted when the VidaShield UV24 is ready to be started again.

Drop Ceiling Installation Instructions

Tools Required

- Rivet Gun
- Screw Gun
- 3/16 Drill Bit
- Phillips Head Bit
- Wire Strippers
- Ladder
- Work gloves and safety glasses

Building Power and Hanging Ceiling Requirements

- Universal voltage required; 110-277
- Requires 1 constant hot circuit for UVC power and 1 switch circuit for downlight power
- Domestic models are designed to be installed in a standard dimension U.S. drop ceiling. Foreign models are designed to be installed in a standard dimension European drop ceiling.
- The unit should be tethered to a secure anchor point that is capable of supporting the fixture's weight in the ceiling.
- Comply with all local, state and federal laws

Step 1:

Remove the VS01, VS02, and/or VS03 from the packaging to locate a completely assembled device.



Figure 2: Unpacking the VS

Step 2:

Each model of the VidaShield UV24 product (01, 02, & 03) will require two mounting brackets that will be located within the packaging. The VS01 product will also be packaged with two fluorescent lamps and an acrylic lens that will be supplied within the installation kit. The VS02 utilizes a LED panel and a polycarbonate lens and the VS03 product does not provide a room light and instead utilizes a standard pattern acoustical ceiling tile.

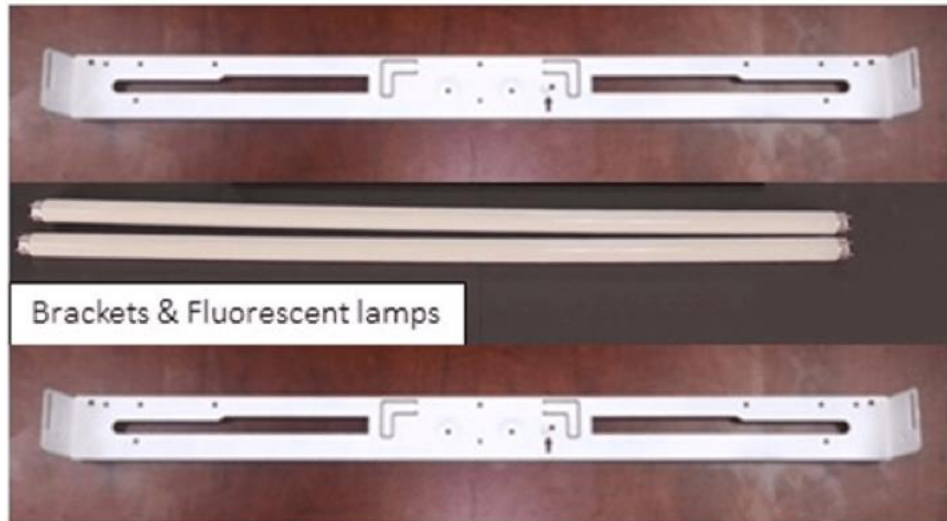


Figure 3: Mounting Brackets

Step 3:

Prep the ceiling and remove any existing fixture. A contractor will be needed to run power to the appropriate locations.

- The VS01 (fluorescent) & VS02 (LED) will require two circuits.
 1. Switch circuit that will operate the downlight
 2. Constant hot circuit operating the UVC lamp
- The VS03 (no ceiling light) will require one circuit.
 1. Constant hot circuit operating the UVC lamp

Step 4:

Install 4 separate 12 gauge supplementary hanger wires to the existing supports by following diagram below from each corner of the unit. (60cm by 120cm for the European)

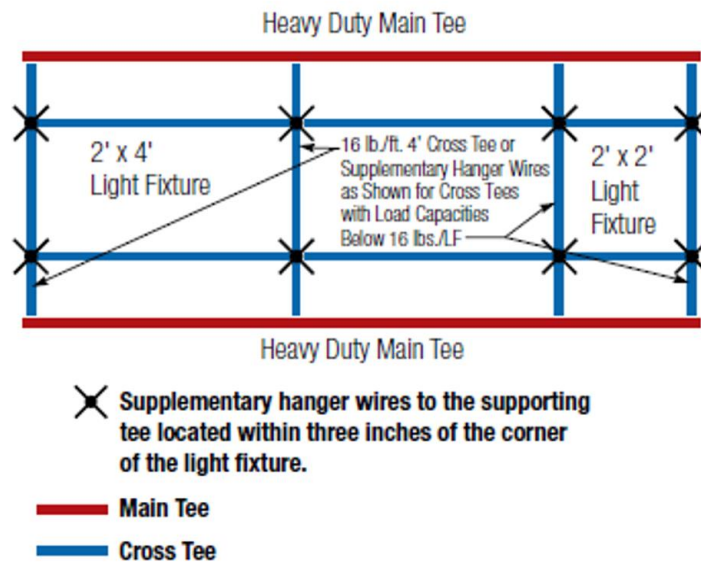


Figure 4: Hanging Diagram

Step 5:

The mounting bracket will need to sit flush against the drop ceiling frame. The mounting bracket contains an arrow indicating the direction of installation.



Figure 5: Mounting Bracket Installation

Step 6:

Caution: Do not drill into the support wire while performing this procedure.

If either of the recessed holes line up with the drop ceiling support wire; do not drill/ rivet in that location to avoid damaging the support wire. In this situation, a single rivet in the center bracket is acceptable. If both rivets can be installed without damaging the support wire, this is preferable.

Using the 3/16" drill bit, enlarge the holes in the two recessed locations in the center of the mounting bracket. Be sure to drill through both the mounting bracket and the drop ceiling frame.



Figure 6: Drilling the Mounting Bracket

Step 7:

Locate the rivet pack provided with your fixture and install the rivets in the center recessed hole(s). (Image 7)



Figure 7: Riveting the Mounting Bracket

Step 8:

To secure the corners of the mounting bracket, locate the pre-drilled hole in each corner. Ensure the hole lines up with the drop ceiling frame. Using the 3/16" drill bit, enlarge the pre-drilled hole. Be sure to drill through both the mounting bracket and the drop ceiling frame.

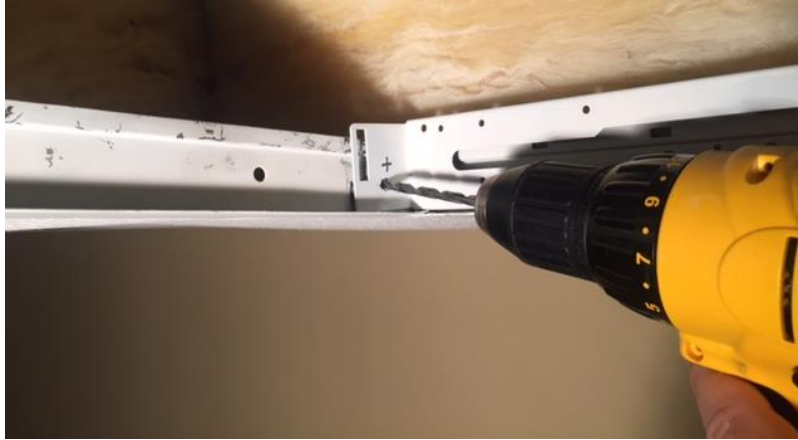


Figure 8: Securing the Mounting Bracket Corners

Step 9:

Install a rivet in each of the pre-drilled corner locations.

Step 10:

Medical Illumination recommends utilizing two people to install a single unit since the VidaShield UV24 models each weigh approximately 45 pounds. The National Institute for Occupational Safety and Health (NIOSH) strongly recommends that no worker should lift anything heavier than 35 pounds without any additional aid.

To install the fixture, insert one shoulder bolt into the slider joint.

Hold the fixture at an angle so the uninstalled shoulder bolt is slightly in front of the installed bolt. Holding the fixture in this position will enable you to easily align the secondary shoulder bolt with the slider joint. Insert the secondary bolt into the slider joint. Now that both shoulder bolts are installed, the fixture will need to be straightened up so that both bolts are parallel and the fixture is no longer at an angle. Now evenly slide the fixture forward until the shoulder bolts reach the end of the slider joint.

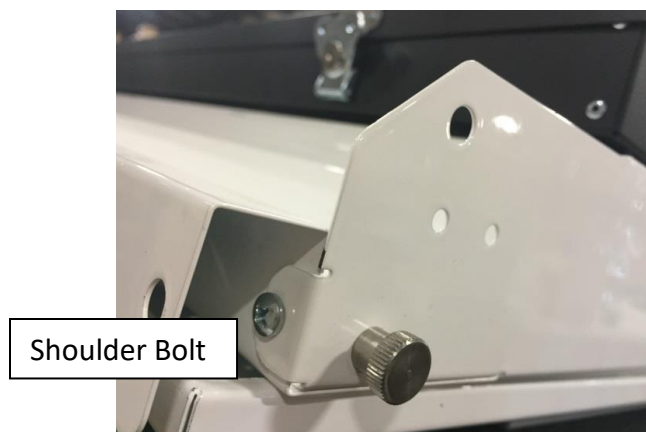


Figure 9: Installing the Shoulder Bolt into the Slider Joint



Figure 10: Fixture Hanging from Ceiling

At this point, the fixture should be hanging at the end of the mounting bracket and should be parallel in the drop ceiling frame (not at an angle). With the fixture hanging from the ceiling, you are now ready to install the power connector.



Figure 11: Preparing to Connect Power

Step 11:

Caution: Ensure all power has been removed to the circuit.

All VidaShield UV24 models will require one constant hot circuit for the UVC input power. The VS01 & VS02 models will require an additional switched circuit to power the down light.

First, remove the access plate & determine if the remaining knock out tab should be removed (for VS01 & VS02 both tabs should be removed). (Image 12)



Figure 12: Removing the Electrical Access Plate

Step 12:

With the proper knock out tabs removed, install the wiring conduit through the access plate and secure with lock ring. Be sure to take note of which circuit is switched and which is constant.

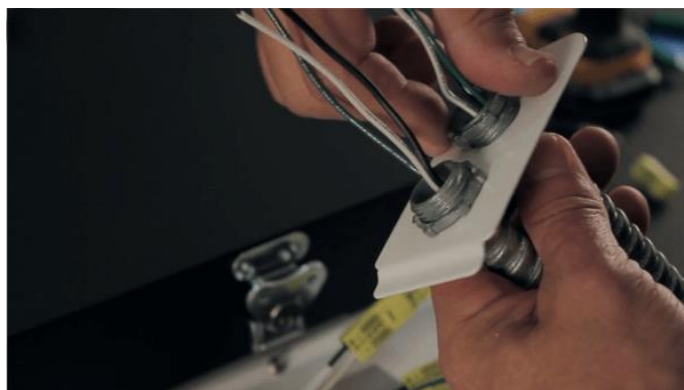


Figure 13: Installing the Wiring Conduit Access Plate

Step 13:

It is important to connect the ground wires from all power connectors to the ground connector on the fixture before connecting the fixture to any power source.

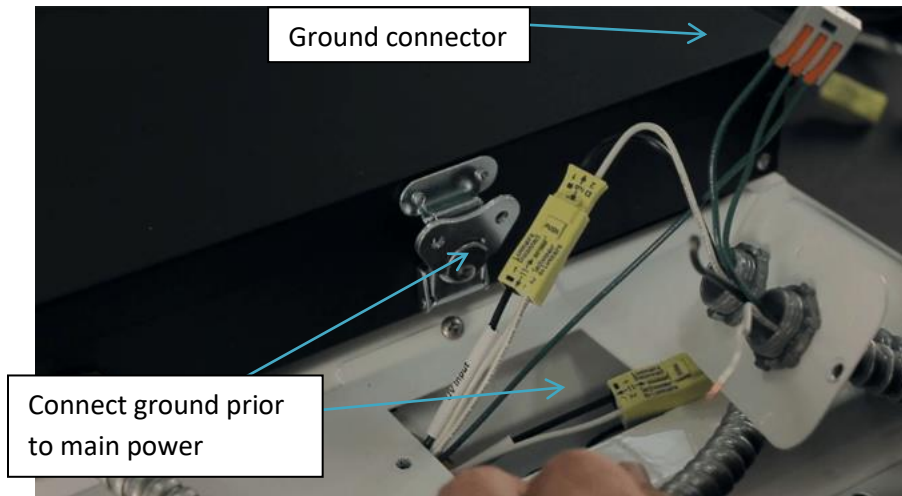


Figure 14: Grounding the System

Remove the male portion of the power connectors and connect one to each of the incoming power circuits.

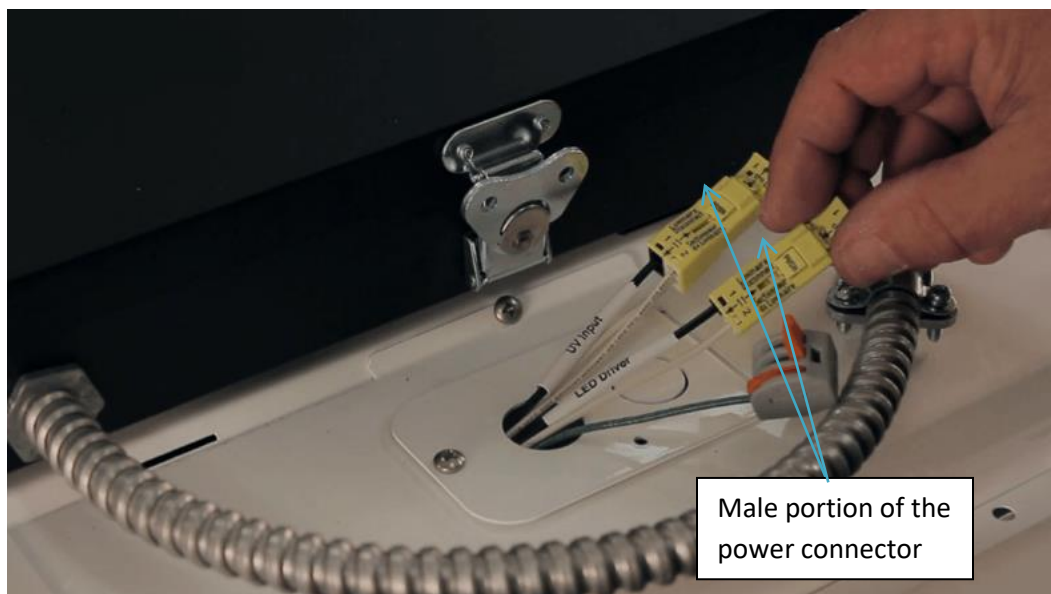


Figure 15: Connecting to Incoming Power

IMPORTANT:

For Domestic & Canadian VidaShield UV24 Models, the black power wire should always be connected to terminal one of the power connector. The white power wire should always be connected to terminal two.

For European VidaShield UV24 Models, the brown power wire should always be connected to terminal one of the power connector. The blue power wire should always be connected to terminal two.

Step 14:

Once the power is connected, all the connectors will need to be placed within the housing. The access plate will now be screwed down.



Figure 16: Completing the Wiring

Step 15:

The fixture is now completely wired and can be installed into the ceiling. The lock bar will need to be held flush against the body of the fixture as it is rotated up into the ceiling. Inspect the rear end of the housing where the door is hinged as it may latch onto the ceiling frame, bracket, and/or rivet when lowering the fixture. This will cause the fixture not to sit flush. Rotate the fixture until the lock bar is just above the drop ceiling frame. Release the lock bar and gently lower the fixture until the lock bar engages the ceiling frame. Ensure that the fixture is placed level into the ceiling as the lock bar is released. If the fixture is not flush, simply compress the lock bar and lower the fixture before releasing the lock bar again. At this point, the lock bar should stop the fixture's rotation and hold it flush in the ceiling.

Step 16:

Drop Ceiling Installation is complete.



Figure 17: Completed Drop Ceiling Installation

OSHPD Compliant Hard Ceiling Mount Installation Instructions

Step 1:

Insure the ceiling is OSHPD compliant. Consult www.oshpd.ca.gov for current OSHPD ceiling specifications.

Step 2:

Locate the structural beams in the ceiling grid and draw reference lines on the sheet rock to serve as aids in alignment. The hard ceiling mount must be installed in a position that insures the mounting screws engage the ceiling structure on all four sides. (Image 18)

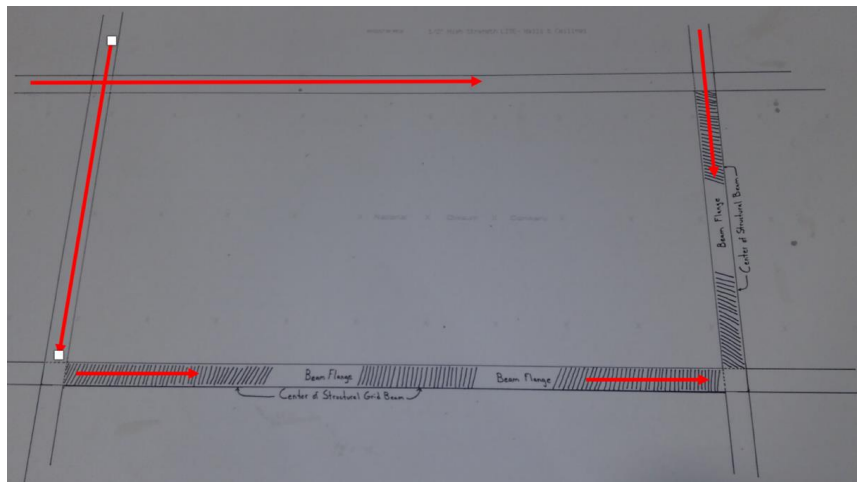


Figure 18: Structural Beams

When selecting a location for the mount, remember to consider where your input power cables reside. Power cables can be routed through the open area in the top of the hard ceiling mount. The VidaShield UV24 Hard Ceiling Mount also has “knock out” holes near each corner to accommodate installations that require power cables to be installed from the side of the fixture. VidaShield Installation and Operating Manual (1003374 Rev. B)

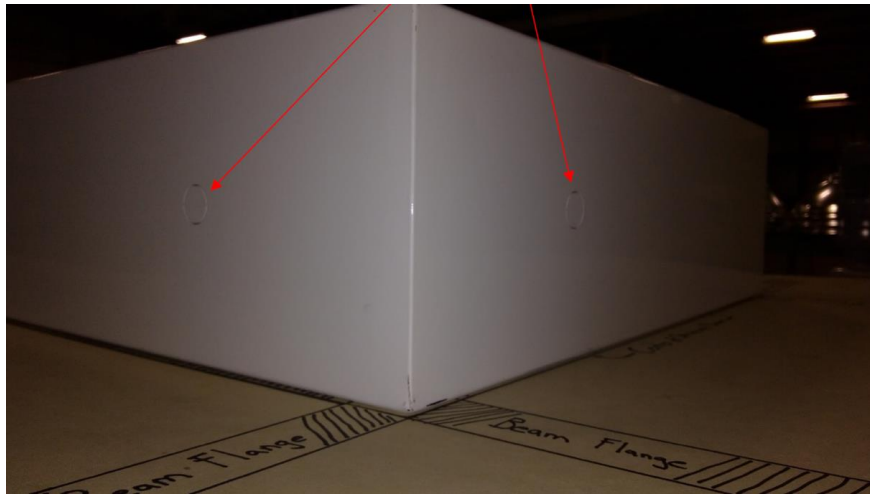


Figure 19: Hard Ceiling Mounting Box Knock-Outs

Step 3:

With the mounting location determined, install the temporary retention brackets in the ceiling approximately $\frac{1}{2}$ inch from the edge of where the hard ceiling mounting flange will be located. The retention brackets should be held in place by “Wall Dogs” or other equivalent fasteners appropriate for bearing a 5lb load in sheetrock.

DO NOT fasten the brackets completely to the ceiling. Leave approximately a $\frac{1}{8}$ in. gap between the bracket and the ceiling.

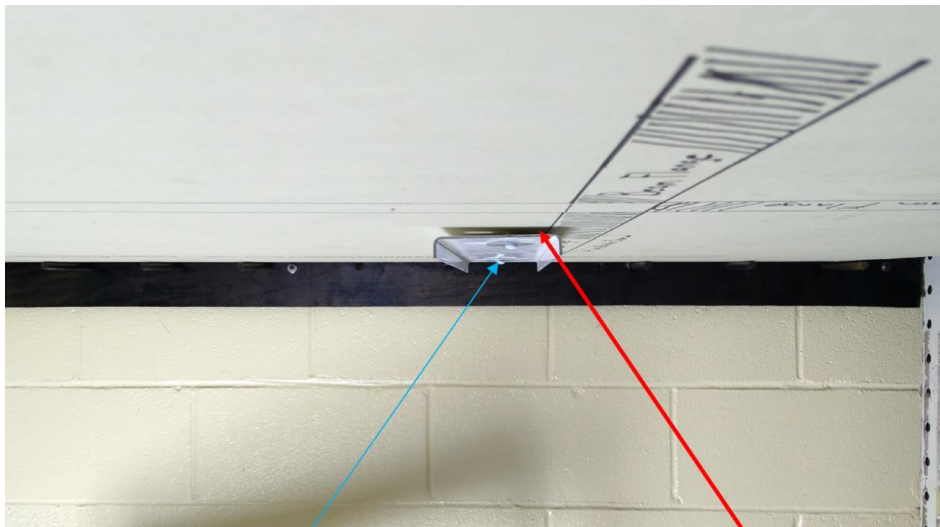


Figure 20: Temporary Retaining Bracket installed - approx. $\frac{1}{8}$ in. gap

Step 4:

Slide the brackets towards one another until the screw stops against the back of the slot in the bracket.



Figure 21: Preparing the Mounting Brackets

Both temporary mounting brackets in place, slid to the rear most position, and ready for hard ceiling mount installation.

Step 5:

Lift the hard ceiling mount in place and slide the retention brackets over the mount's flanges so it will hang from the temporary retention brackets.



Figure 22: Mounting the Hard Ceiling Mounting Box

Step 6:

With the fixture suspended by the retention brackets, make the necessary positioning adjustments and tighten the brackets against the ceiling so the mount is held firmly in the correct position.

Be careful not to over-tighten the fasteners and strip them out of the sheetrock. The brackets only need to be tightened enough to temporarily hold the mount in position.



Figure 23: Temporarily Mounting of the Hard Ceiling Mounting Box

Step 7:

With the mount in position drive the #6 self-drilling fasteners through the holes in the mount flange, through the ceiling material, and through the ceiling grid structural members. Pay close attention to insure the screws fully penetrate the ceiling grid structural members and tighten properly against the mount flange. *(Cutaway view provided for illustration, the ceiling will normally be solid as shown in the previous pictures)*

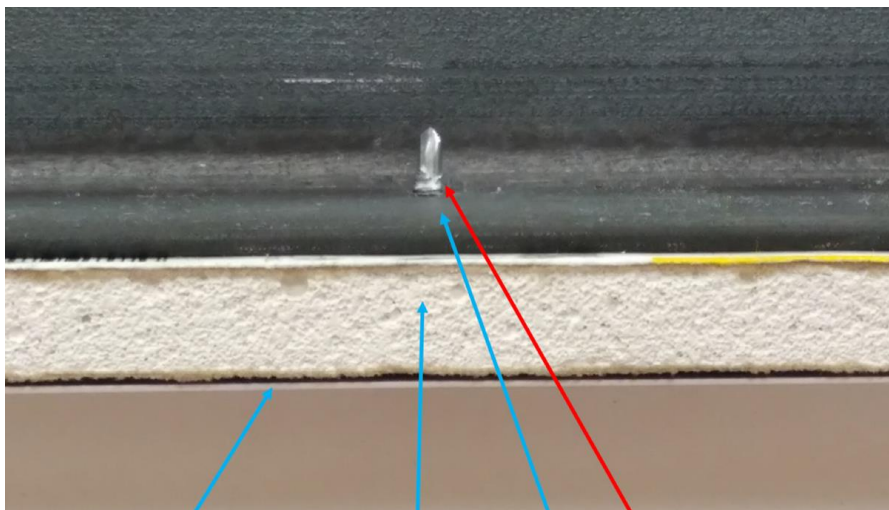


Figure 24: Hard Ceiling Mount, Flange/Sheet Rock/Structural Ceiling Beam

When using self-drilling screws, make sure the threaded portion of the screw is long enough to traverse all ceiling material and completely pass through the structural ceiling member.

Take care not to strip out the fastener in the structural ceiling members. (*Structural ceiling grids are usually made from lightweight aluminum and can be stripped if close attention is not paid during installation. If you do strip even a single screw hole, the fixture must be moved slightly to a new position that allows all fasteners to be re-installed so there are no stripped screw holes.* Please consult the ceiling grid manufacturer's guidelines regarding the safe minimum and maximum whole spacing.

IMPORTANT NOTICE: When installing the VidaShield UV24 Hard Ceiling Mount, all screws must be utilized and all screws must pass through the structural ceiling grid. These two requirements must be completely achieved or the installation will not meet OSHPD compliance requirements and could result in damage or injury.

Step 8:

After all fasteners have been installed on both long (4ft.) sides of the mount, remove the temporary mounting brackets. Install the remaining fasteners on each end of the mount.

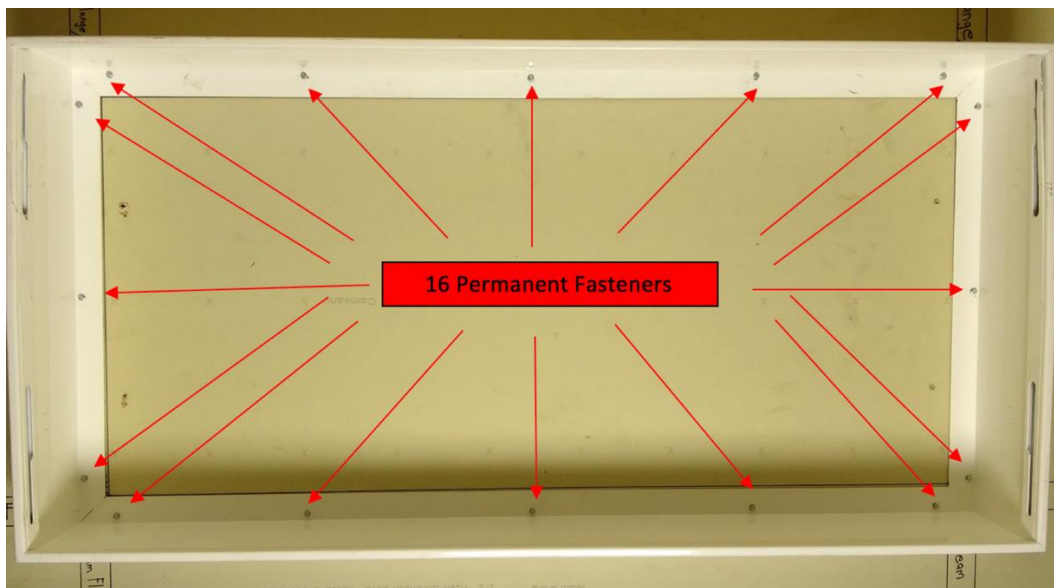


Figure 25: Finalizing the Hard Ceiling Mounting Box Installation

Step 9:

When all screws are installed, perform a final inspection to insure all fasteners are secured against the face of the mount flange. Installation of the hard ceiling mount is now complete and the VidaShield UV24 unit can be installed into the mount as outlined in the overview.

Step 10:

OSPHD Compliant Hard Ceiling Mount Installation can be completed.



Figure 26: UV Operating Instructions

Operating Instructions

If installed as instructed, the VidaShield UV24 runs autonomously 24/7 even if the fluorescent or LED lamps in the VS01 or VS02 are turned off at a wall switch. The VidaShield UV24 is an engineering control system that requires minimal quarterly maintenance and treats the air with no human intervention necessary when the UV lamp and fans are operating. Follow these steps to keep it operating as intended. The VidaShield UV24 system is to be operated indoors, in a temperature and humidity-controlled environment between 68-122 degrees Fahrenheit and 20-80% humidity.

Antimicrobial Performance

VidaShield UV24 operates at the UV-C wavelength of 253.7 nanometers. It continuously reduces bacterial and fungal populations in the air treated by the units and reduces the settlement of viable bacteria and fungi from treated air.* Unlike terminal cleaning systems which operate for short periods in sealed environments, the VidaShield UV24 operates continuously in an open environment. Nevertheless, even in rooms where the VidaShield UV24 is installed, whole room bacterial and fungal particulate air concentrations and composition can be expected to experience wide variations over the course of a day and longer periods. These conditions are normally influenced by a wide variety of independent and changing circumstances that cannot be overcome by the VidaShield UV24 operating in an open environment. Important independent influences will vary by facility and location but may include, for example, the rate of room air exchanges by building HVAC systems, room air humidity and temperature, the relative quality and microbial/particulate composition of air entering the room through doors and other openings, and other changing or cyclical room and building activities affecting air quality. For these reasons, whole room microbial concentrations will vary between installation locations and over time. It is not possible to predict the extent of microbial unit reductions that will be achieved by the VidaShield UV24 in whole room air or on surfaces in any particular room or environment. The VidaShield UV24 is not a substitute for good building air exchange practices or manual cleaning and disinfection practices.

UV Lamp Check Procedure

In order to validate if the UV lamp is working properly, you must turn off the power to the UV lamp and observe the indicator light. Since the VidaShield UV24 unit is typically connected to a hot switch to power the UV ballast and an on/off switch to power the lights, you have to disconnect the hot switch to the UV ballast to power down the UV. If the indicator light illuminates for a short moment and is not continuous, then the UV bulb is working properly. But if the indicator light ever appears to be illuminated in a continuous manner, then the UV bulb will need to be replaced.

NOTE:

VS01 – Red exterior indicator light (Image 26)

VS02 – Green interior indicator light

VS03 – Red interior indicator light

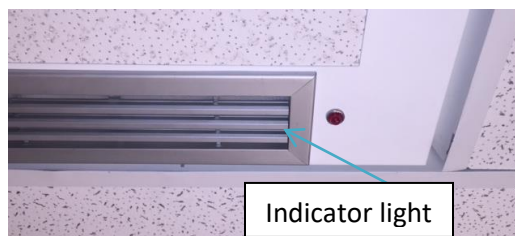


Figure 27: UV Indicator Light

* Reductions measured as the minimum number of microbial units per surface area or minimum number of microbial units per volume of treated air.

UV Lamp Maintenance:

The VidaShield UV24 is designed to treat the air 24 hours a day/7 days a week. In order to assure that the UV lamp in each unit works as expected, we recommend that you change it annually. The intensity of UV lamps continuously degrades during use will start to depreciate to a significant degree after 9000 hours (375 days) of constant use. The UV lamp used in this unit is a special lamp. Please contact your VidaShield UV24 distributor or the factory for replacement parts.

MERV 6 Filter Maintenance:

We recommend changing the MERV 6 filter every 3 months. Dust and debris gather on the filter as the fans draw air into the system so keeping the filter clean is critical to the operation of the unit. The filter used in this unit is a special filter designed for the VidaShield UV24. Please contact your VidaShield UV24 distributor or the factory for replacement parts.

Managing Spent UV Lamps:

In 1999, the US Environmental Protection Agency (EPA) added a provision for mercury-containing lamps to the Universal Waste Rule (UWR, 40 CFR Part 273). The UWR was developed to encourage recycling and proper disposal of these wastes, which meet the Federal criteria for hazardous waste but are widely generated and typically do not pose an immediate and undue risk. Here is a list of lamp recyclers you can contact for services near you. <http://www.lamprecycle.org/commercial-lighting-lamp-recyclers/>

Troubleshooting:

1. If the indicator light is on, there is a possible issue with the UV lamp and/or UV ballast.
 - Wearing eye protection appropriate for UVC light protection, remove the lid from the UV chamber. When the UV chamber lid is removed, the safety switch will be automatically disengaged, shutting off the UV lamp. Press the safety switch down to see if the UVC lamp lights.
 - If the lamp does not light, replace it. After a “known good” (new) lamp is installed, press the safety switch to verify the new lamp operates properly and that the warning indicator does not illuminate.
2. If “known good” UVC lamp does not light up:
 - Remove UVC lamp and with the appropriate multi-meter, test lamp socket to see if 24v is reaching the socket. If 24v is not present at the socket, remove the ballast tray cover and locate the UV Ballast. Remove the output wires from the lever nuts they are connected to and test for voltage across the output wires directly from the ballast.
 - If the correct voltage indicated on the ballast case is not measured, replace the ballast.
3. If the fan assembly stops spinning?
 - UV lamp failure is NOT the reason for the warning light. Next, remove the top air baffles from the end of the UV chamber that the power connector is joined to. Once the top air baffles are removed, the fan assembly should be visible. Wearing eye protection suited for UVC light, reengage the safety switch and visually determine if all four fans are running. If any of the fans are not spinning then the fan array must be replaced.
 - Remove the bottom air baffle. Disconnect all the red wires running from the fan assembly from the five position lever nut containing all red wires. Remove all the back wires running from the fan assembly from the five position lever nut containing all black wires. Lift the fan assembly out of the unit. Insert the new fan assembly and reconnect all wires back into their original orientation.
 - Wearing eye protection suited for UVC light, engage the safety switch to verify all new fans are operational. Once successful, replace the bottom air baffle taking care not to pinch or puncture any of the wires with the baffle or mounting screws. Replace the top air baffles and reinstall the UV chamber lid.

For additional trouble shooting assistance, please contact Medical Illumination at (800) 831-1222 or (818) 838-3025.

Replacement Parts:

To order replacement fluorescent lamps, UV lamps, MERV 6 filters, ballasts, & other components, contact us by phone at (800) 831-1222 or (818) 838-3025..